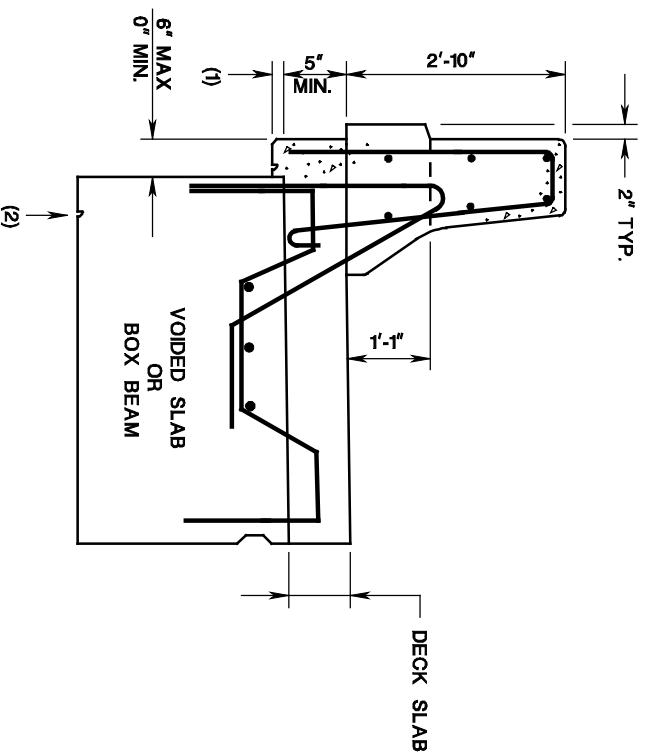


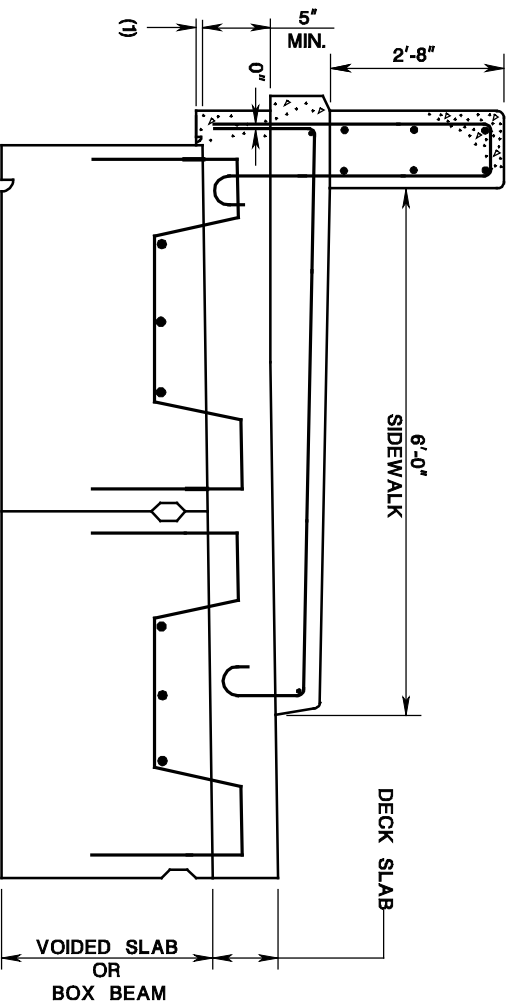
PRESTRESSED CONCRETE SLAB AND BOX BEAMS – PARAPET DETAILS

ISSUED: 2009

PLATE
3.10-8



NEW JERSEY SHAPED PARAPET



2'-8" PARAPET WITH SIDEWALK

NOTES:

1. 1" MINIMUM THICKNESS FOR OVERHANGS GREATER THAN 3". PROVIDE 3/4" DRIP NOTCH AS NEEDED ON UNDERSIDE FOR OVERHANGS LARGER THAN 4".
2. PROVIDE 3/4" DRIP NOTCH ON FASCIA BEAMS.
3. PROVIDE ADEQUATE REINFORCEMENT IN SLAB OVERHANG, #16 BARS MINIMUM.
4. SEE BRIDGE CONSTRUCTION DETAILS FOR MORE DETAILS ON PARAPETS.